



**Università degli studi di
Bari**

**Corso di Laurea in:
INFERMIERISTICA
FISIOTERAPIA**

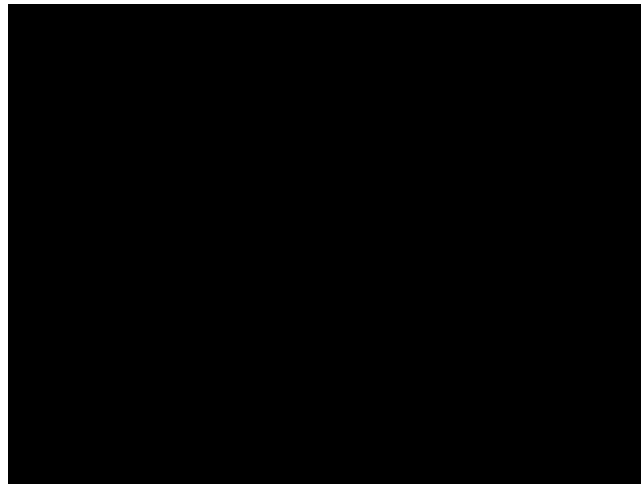
E

IGIENE DENTALE

Facoltà di Medicina e Chirurgia

**CORSO DI
ANATOMIA UMANA**

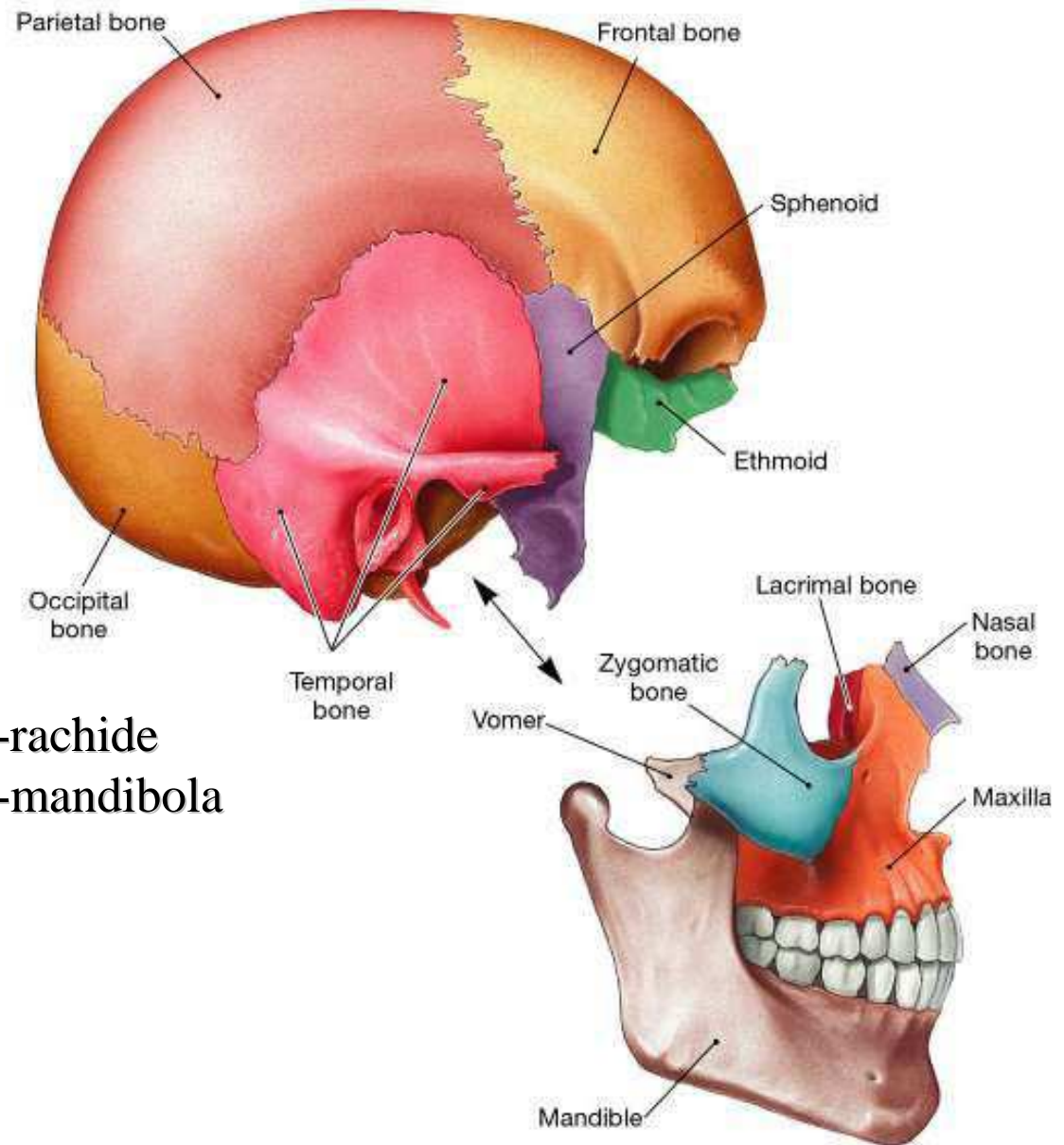
IL CRANIO



NEUROCRANIO
SPLANCNOCRANIO

- Articolazioni:
 - tipo immobile
 - tipo mobile
 - cranio-rachide
 - cranio-mandibola

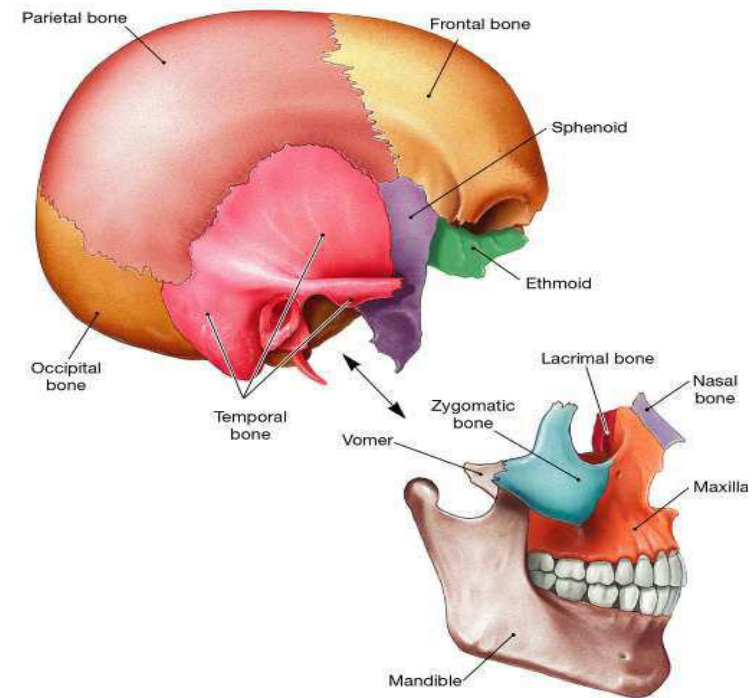
- Muscoli:
 - intrinseci
 - estrinseci



Cranio

- OSSA del neurocranio e dello splancnocranio

SKULL	
CRANIUM	8
Occipital bone	1
Parietal bones	2
Frontal bone	1
Temporal bones	2
Sphenoid	1
Ethmoid	1
FACE	14
Maxillae	2
Palatine bones	2
Nasal bones	2
Inferior nasal conchae	2
Zygomatic bones	2
Lacrimal bones	2
Vomer	1
Mandible	1



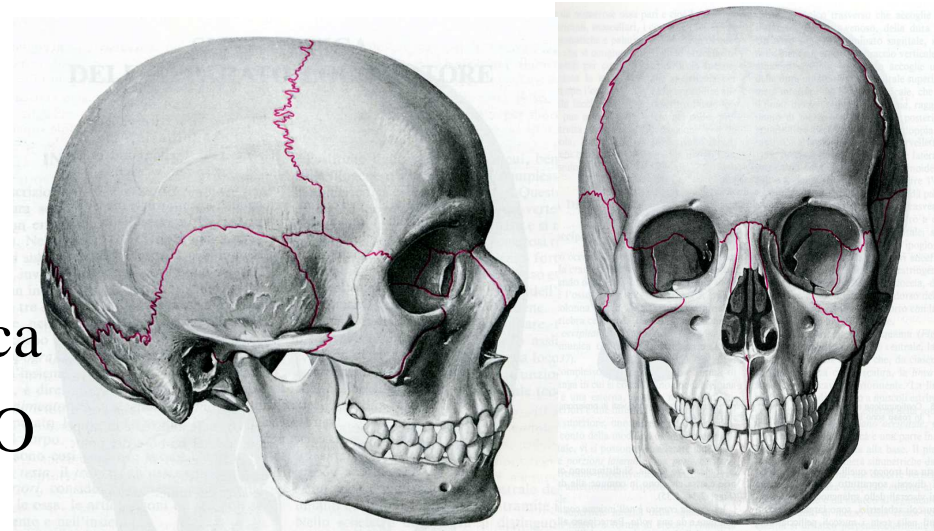
Cranio

- Neurocranio

- 8 ossa
- Forma la scatola cranica
- Protegge l'ENCEFALO

- Splancnocranio

- Presenta l'ingresso delle vie respiratorie ed alimentari
- Cavità orbitarie, nasali, buccale

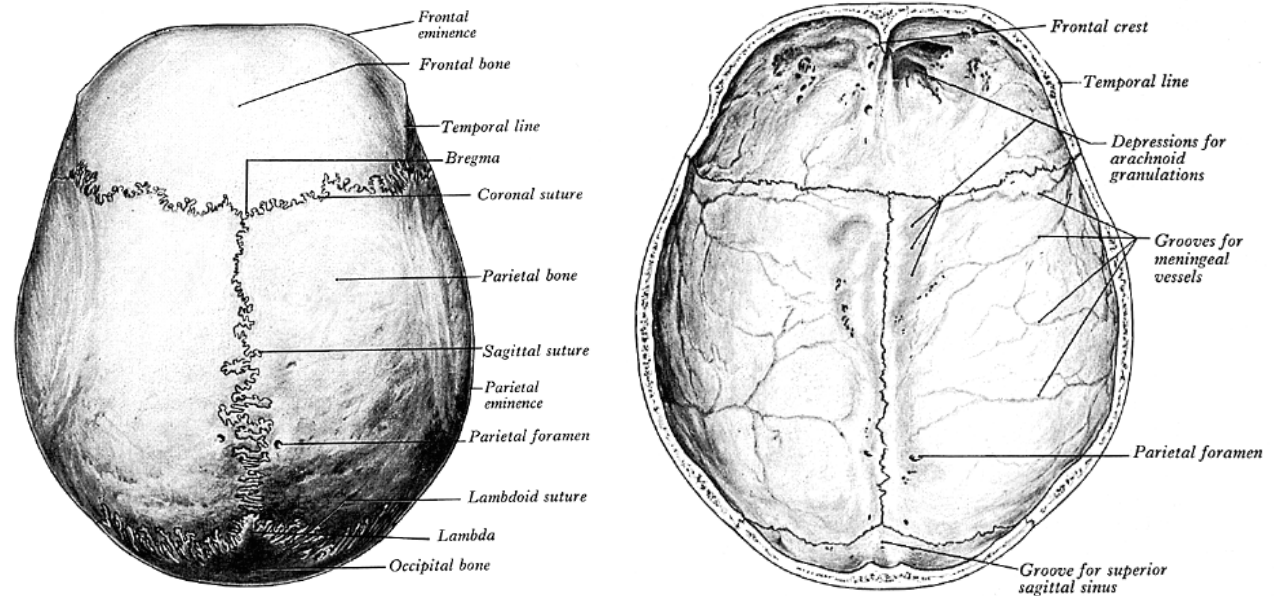


Suture del cranio

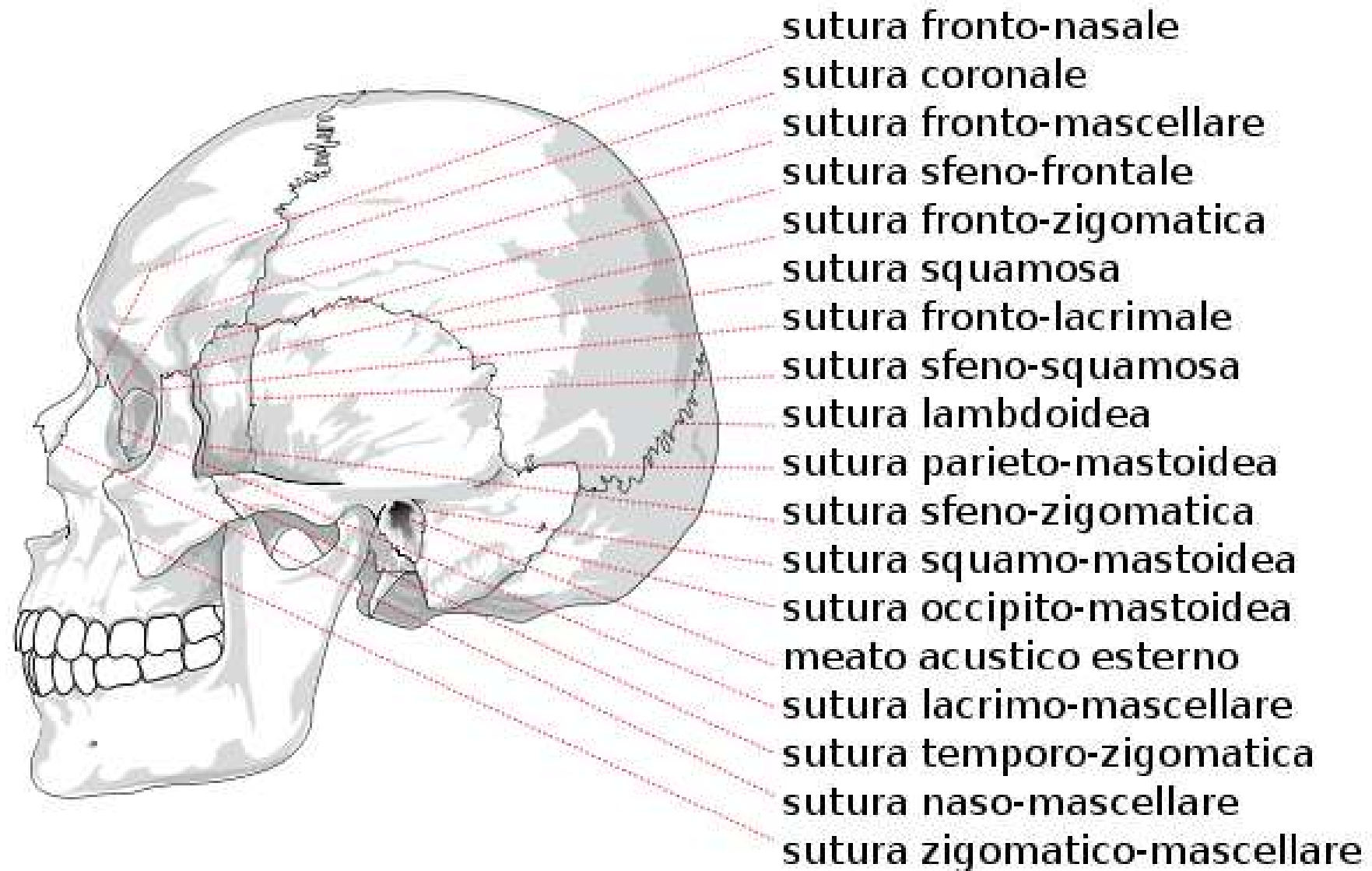
- Articolazioni fisse, uniscono le ossa del cranio

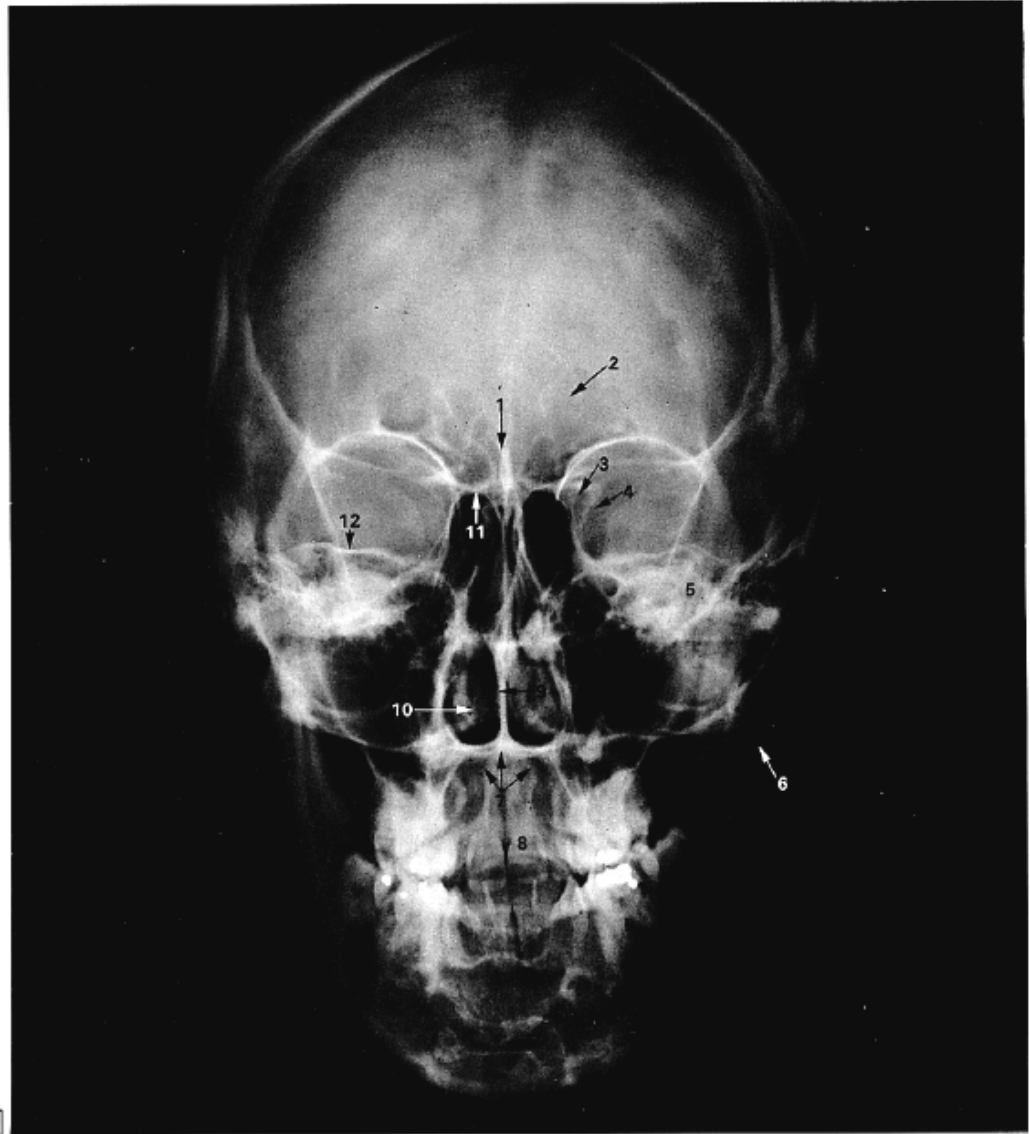
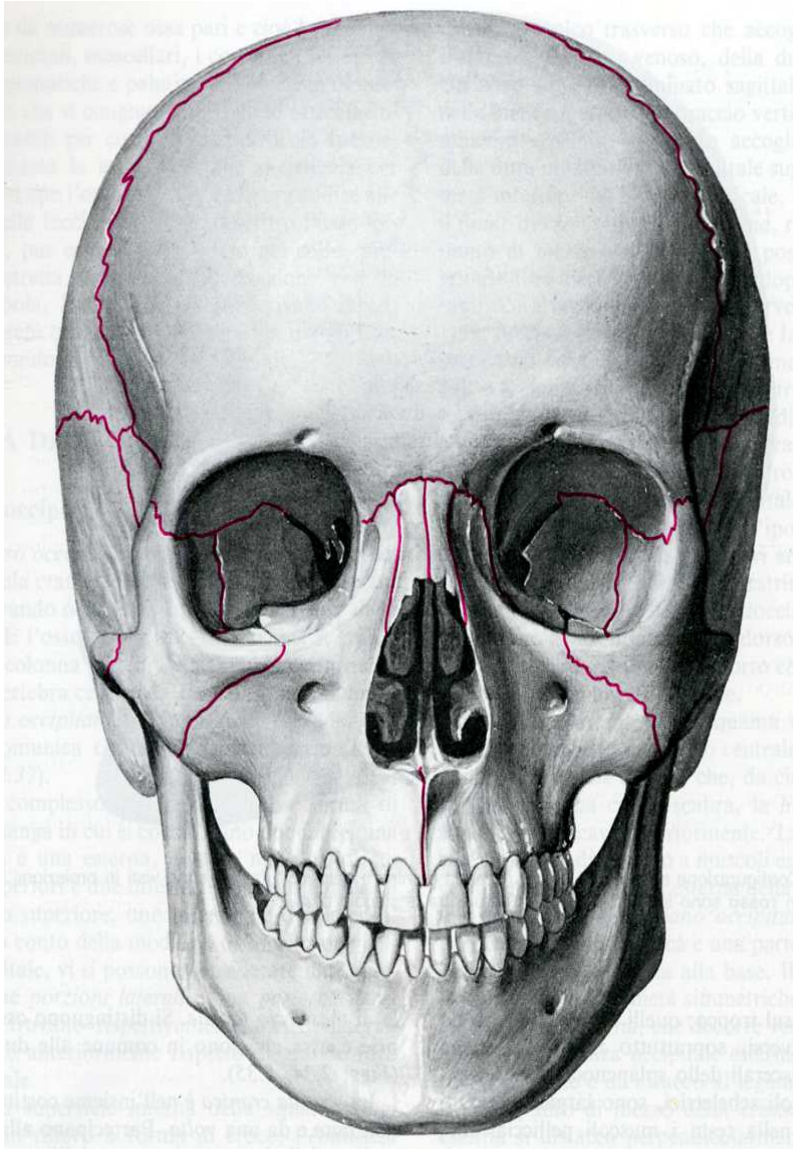
- 5 suture

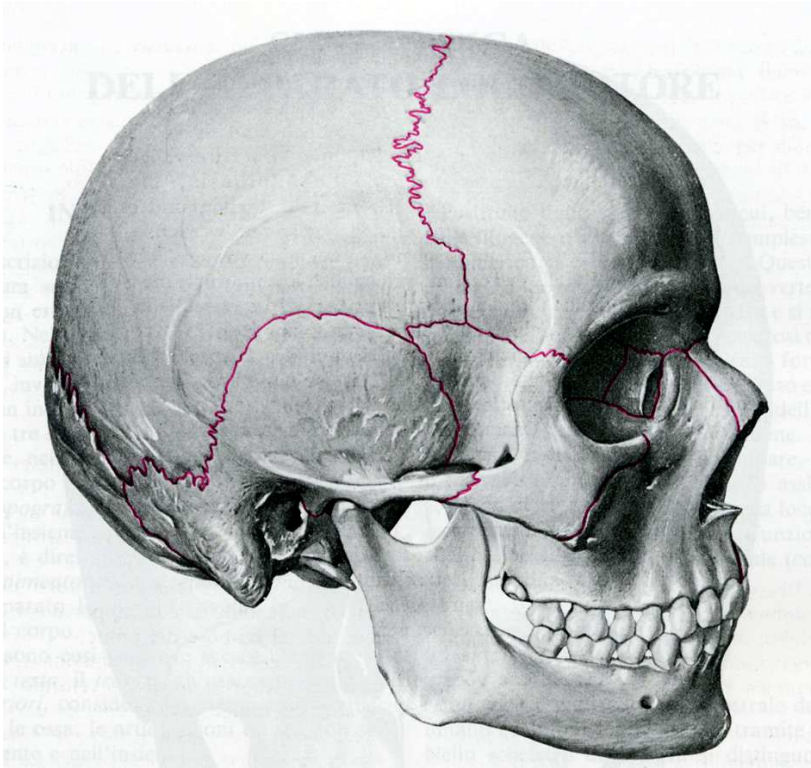
- Coronale
- Sagittale
- Lambdoidea
- Squamosa
- Frontonasale



Suture del cranio



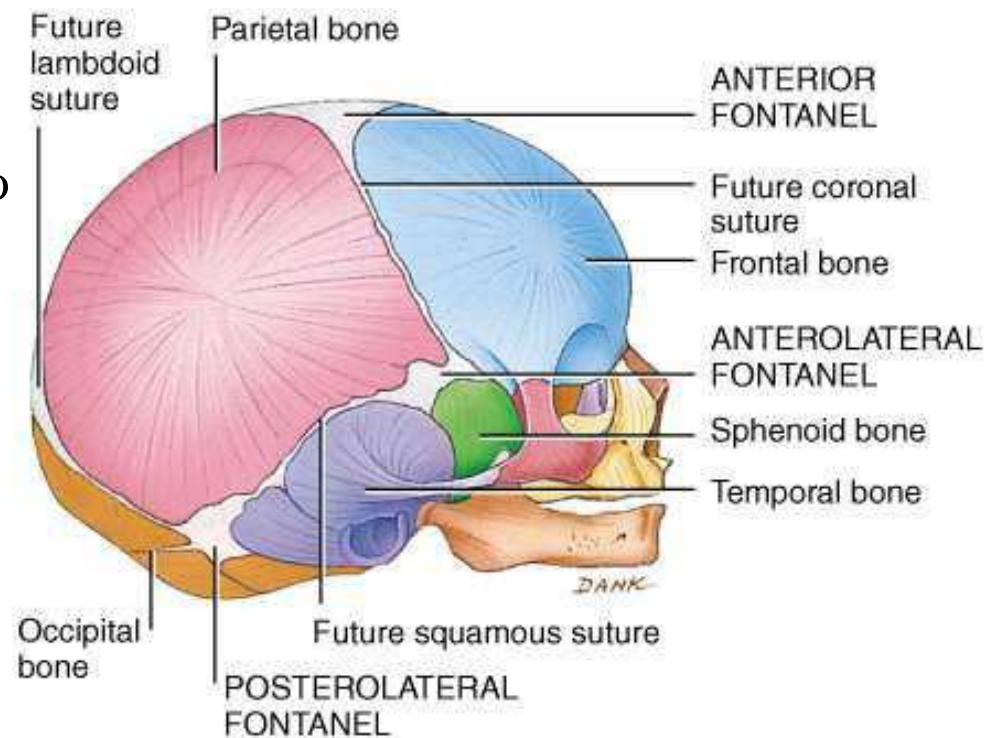
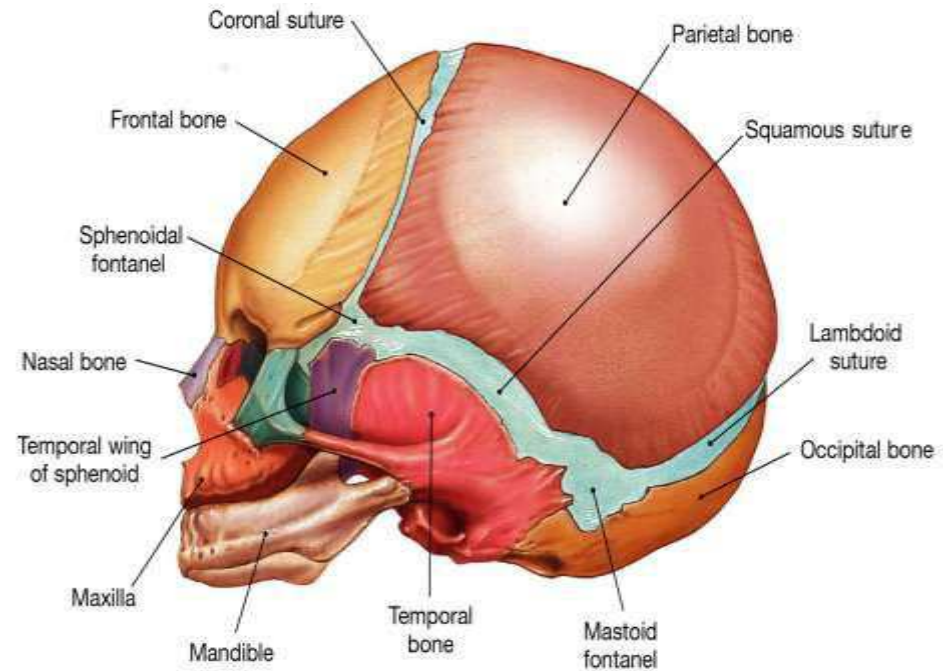




A

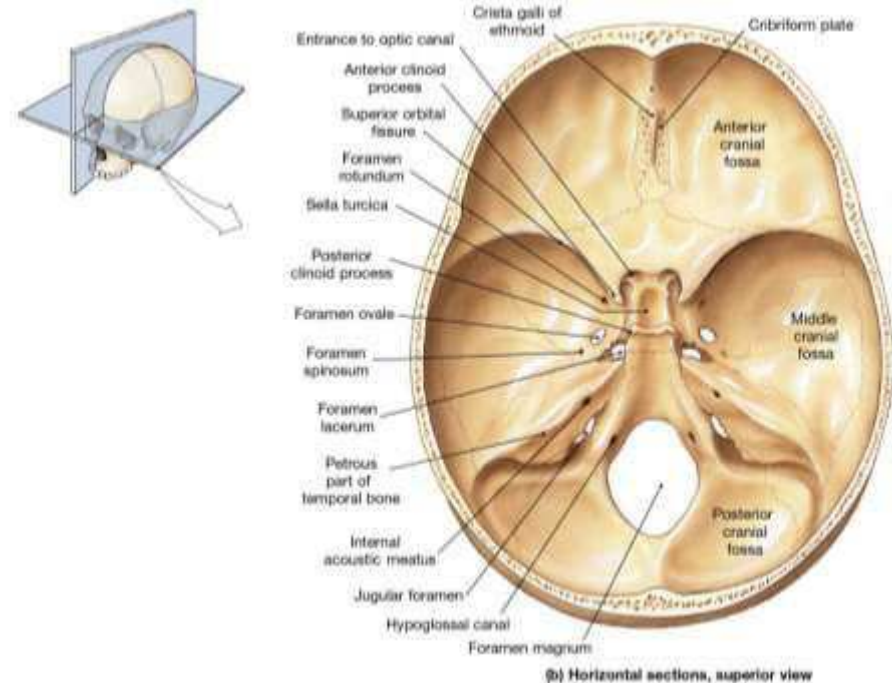
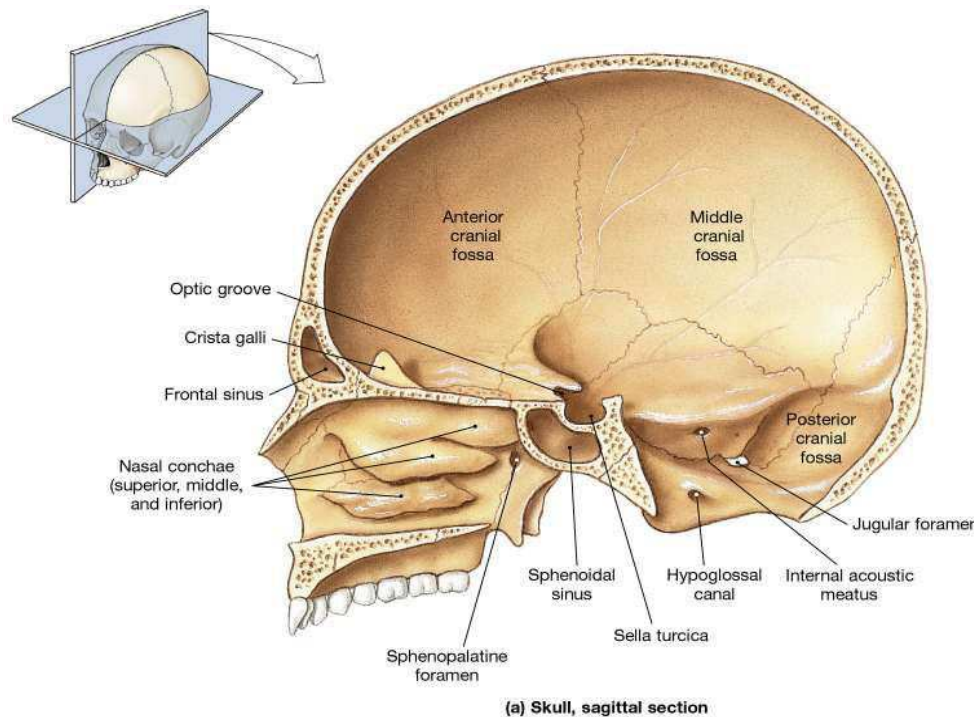
Fontanelle

- Spazi chiusi da connettivo fibroso denso
- Articolano alcune ossa del neurocranio
- Favoriscono il passaggio del feto nel canale del parto
- aiutano la rapida crescita dell'encefalo durante la vita neonatale



Fosse Craniche

- Depressioni nel pavimento del neurocranio
- Fossa cranica Anteriore
 - Frontale, etmoide, piccola ala dello sfenoide
- Fossa cranica media
 - Sfenoide, temporale, parietali
- Fossa cranica Posteriore
 - Occipitale, temporale, parietali



OSSA DEL NEUROCRANIO

Osso Occipitale

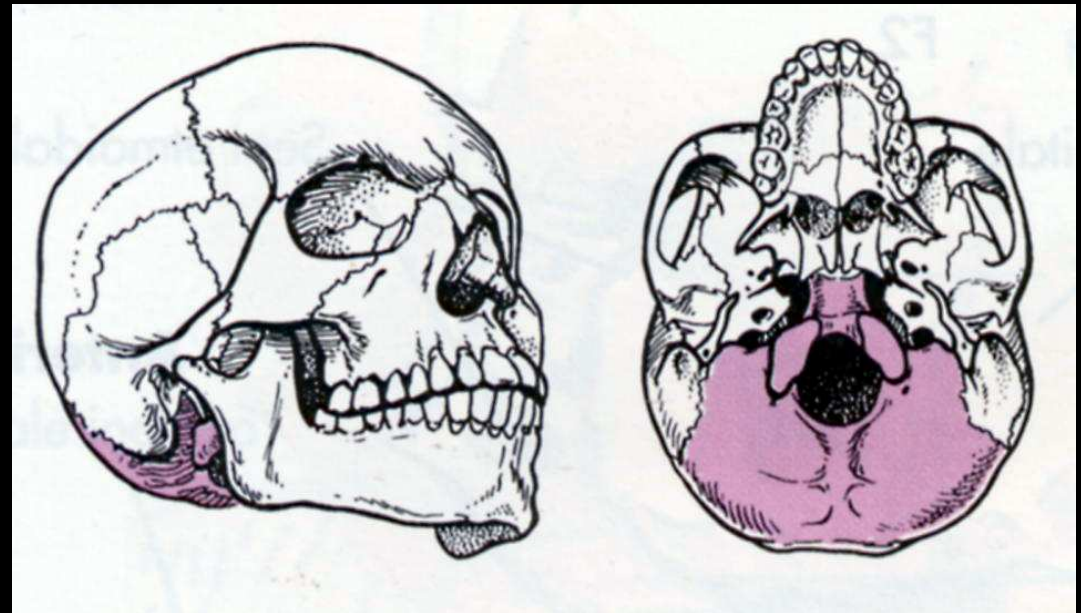
Osso Sfenoide

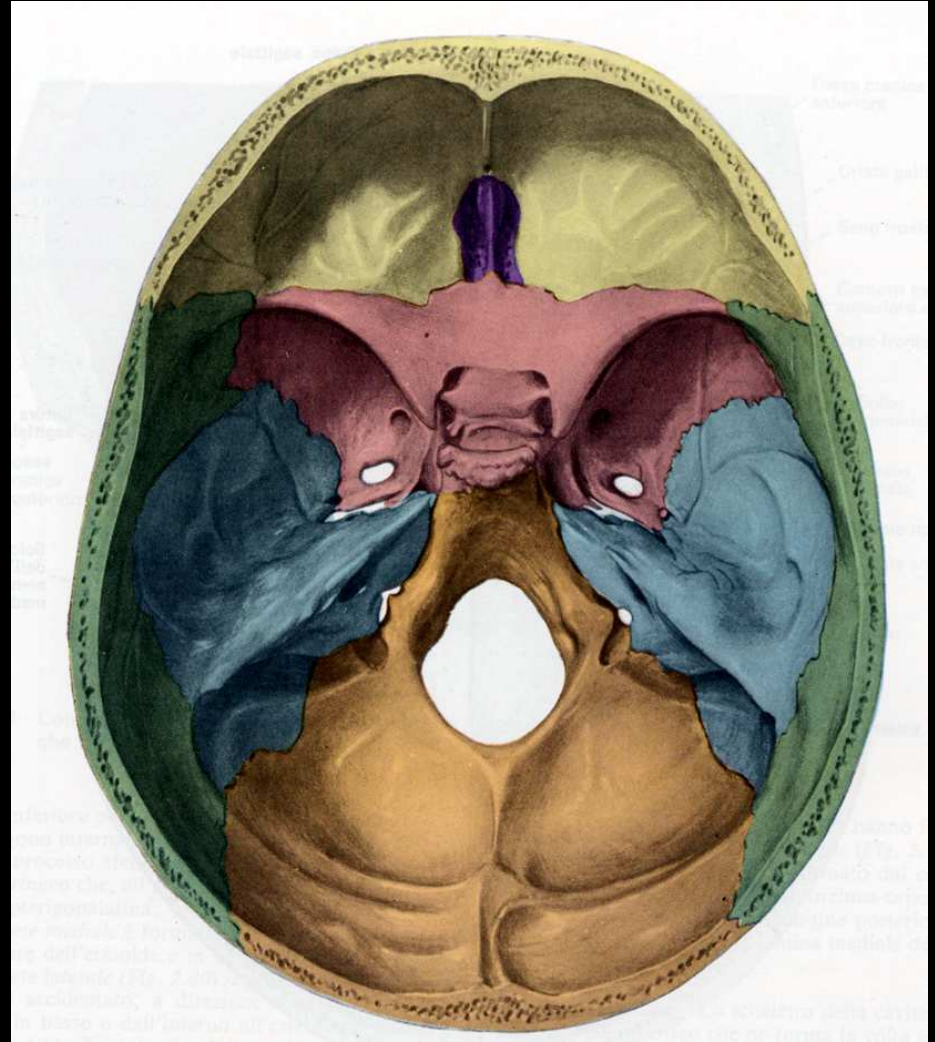
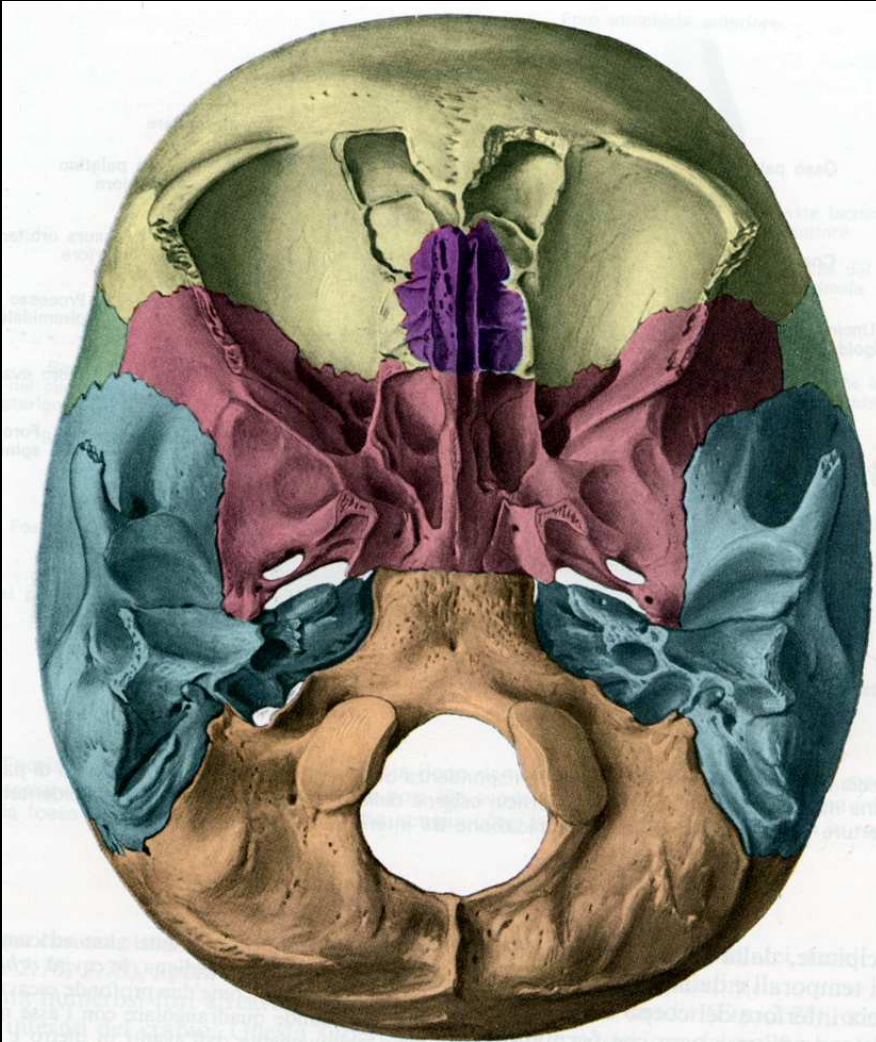
Osso Etmoide

Osso Frantale

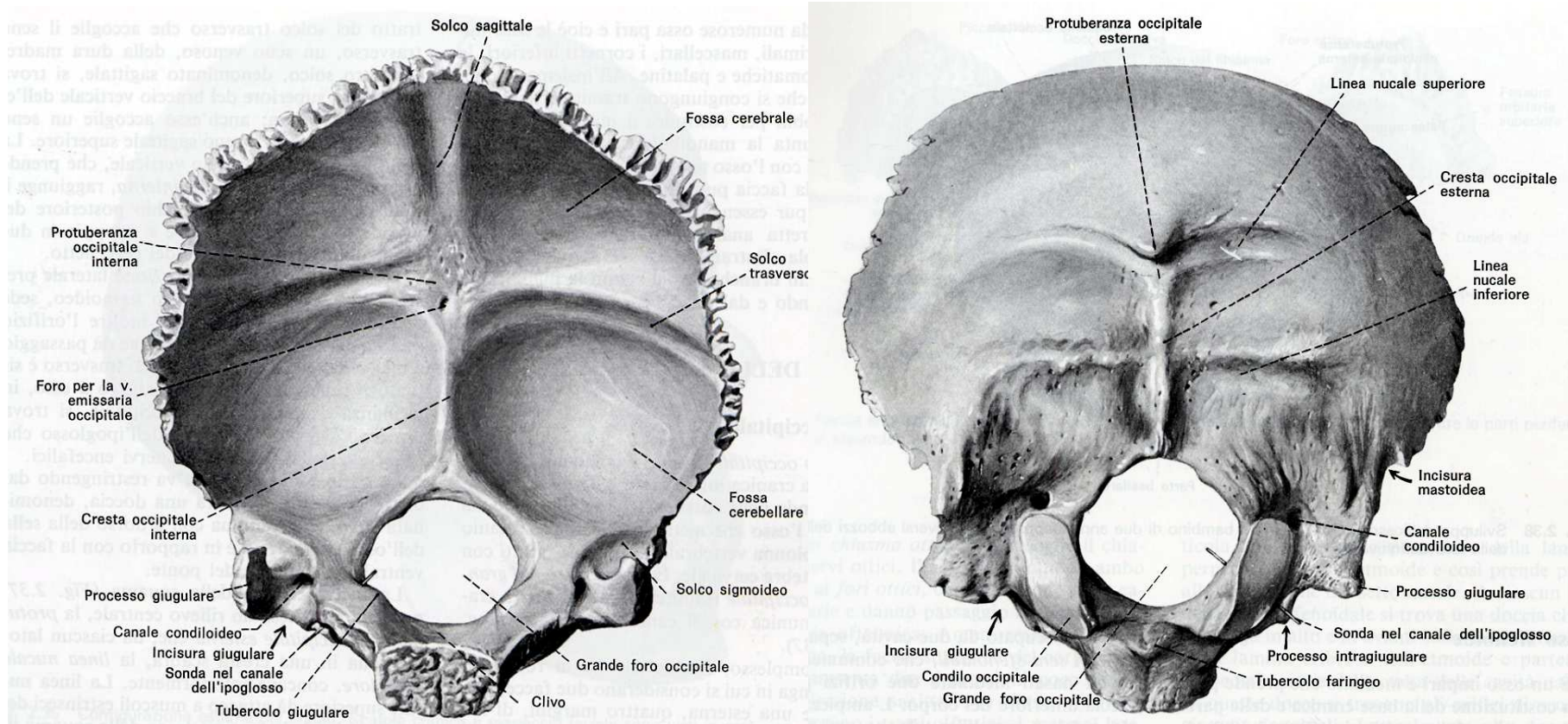
Osso Temporale

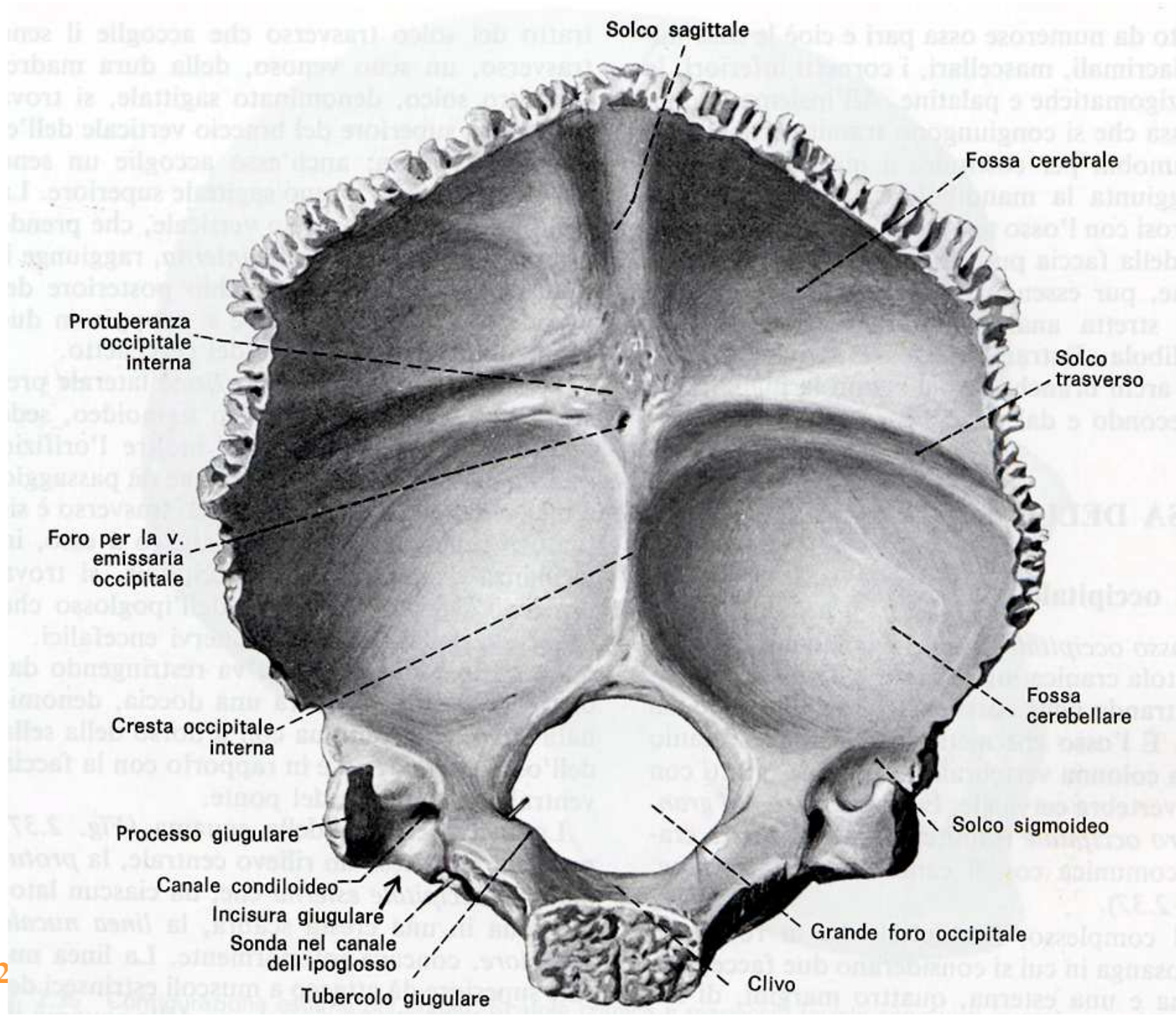
Osso Parietale

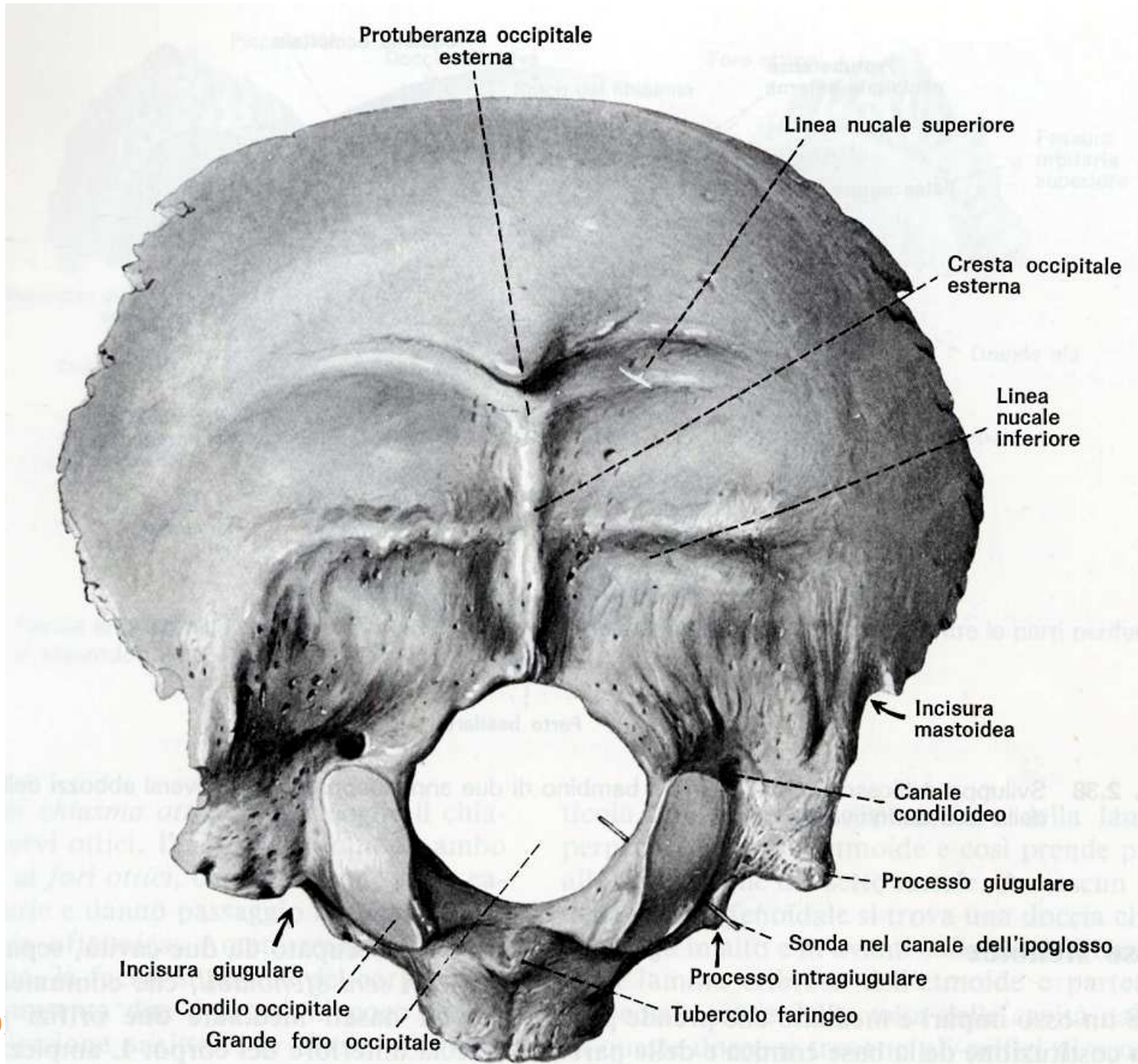




OSSO OCCIPITALE







OSSA DEL NEUROCRANIO

Osso Occipitale

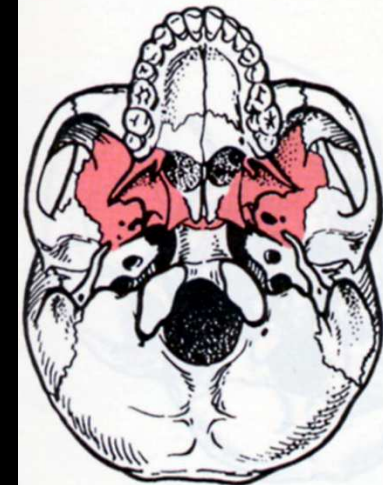
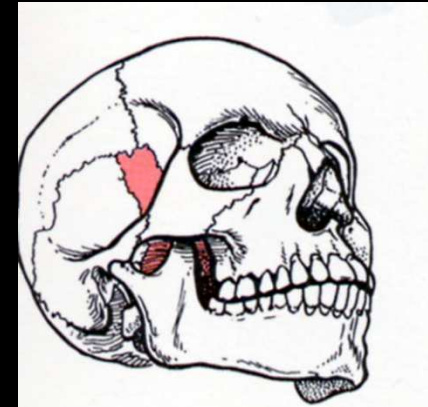
Osso Sfenoide

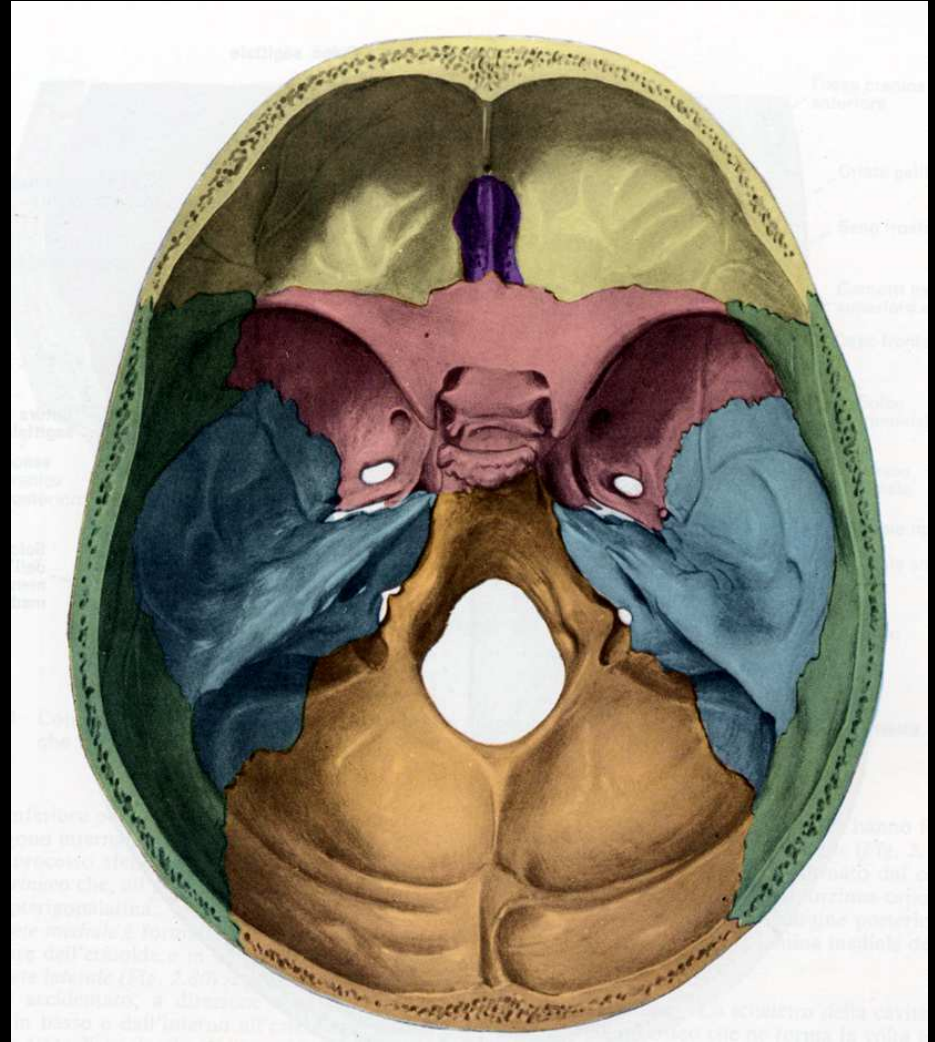
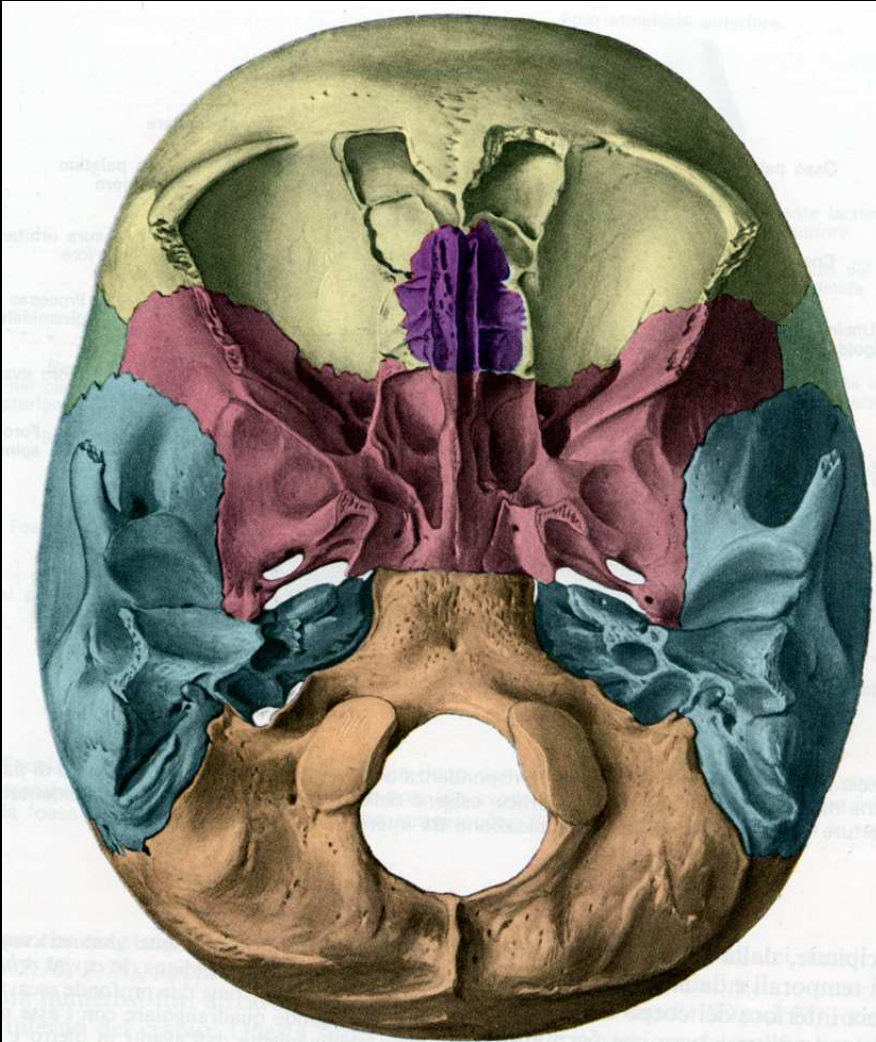
Osso Etmoide

Osso Frontale

Osso Temporale

Osso Parietale





OSSO SFENOIDE

osso impari mediano
costituisce parte:

Base del cranio

Cavità nasali

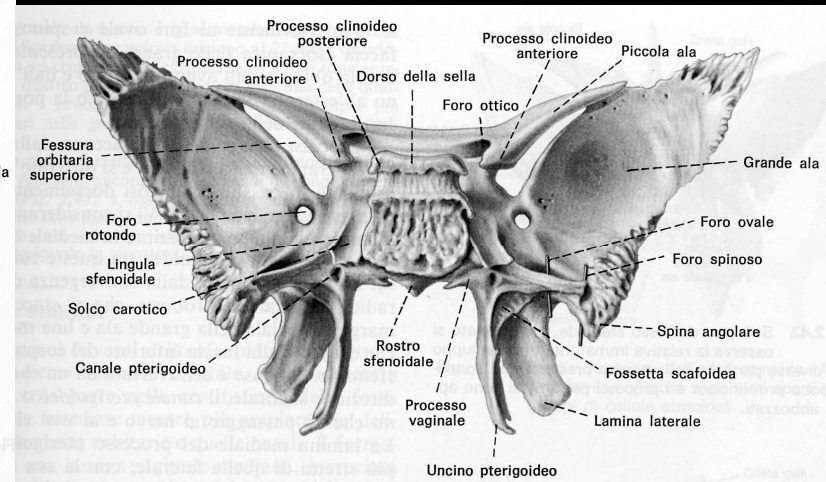
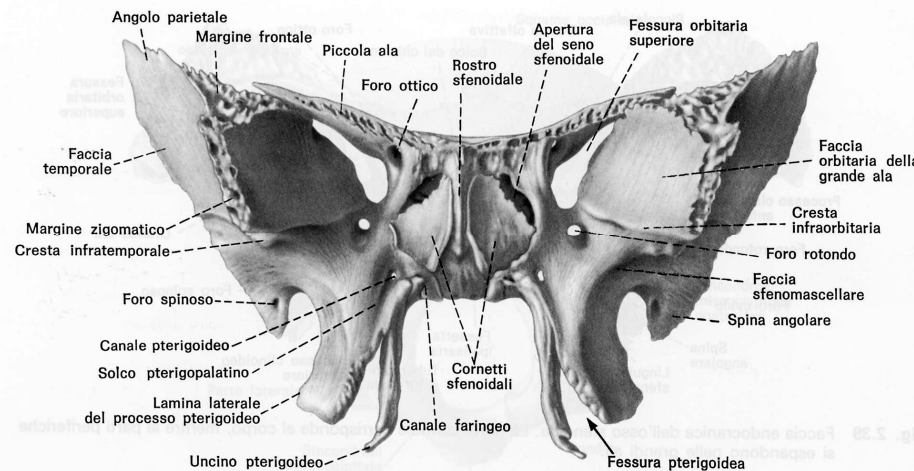
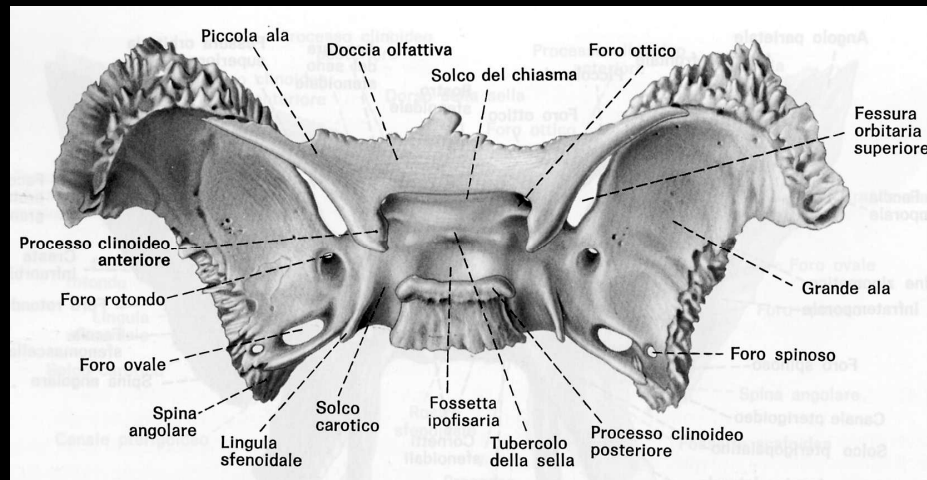
Cavità orbitarie

Rappresentato da:

corpo

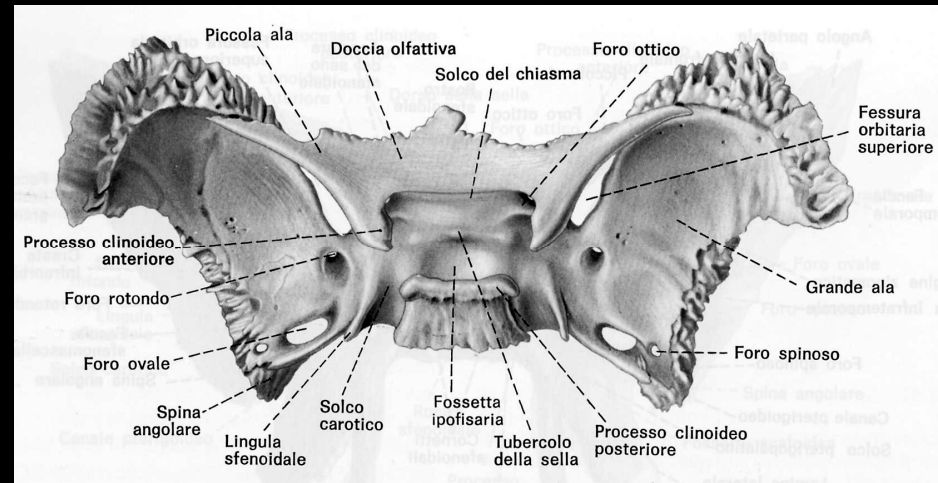
piccole e grandi ali

processi pterigoidei



Il corpo dello sfenoide

Faccia sup o sella turcica
fossa ipofisaria

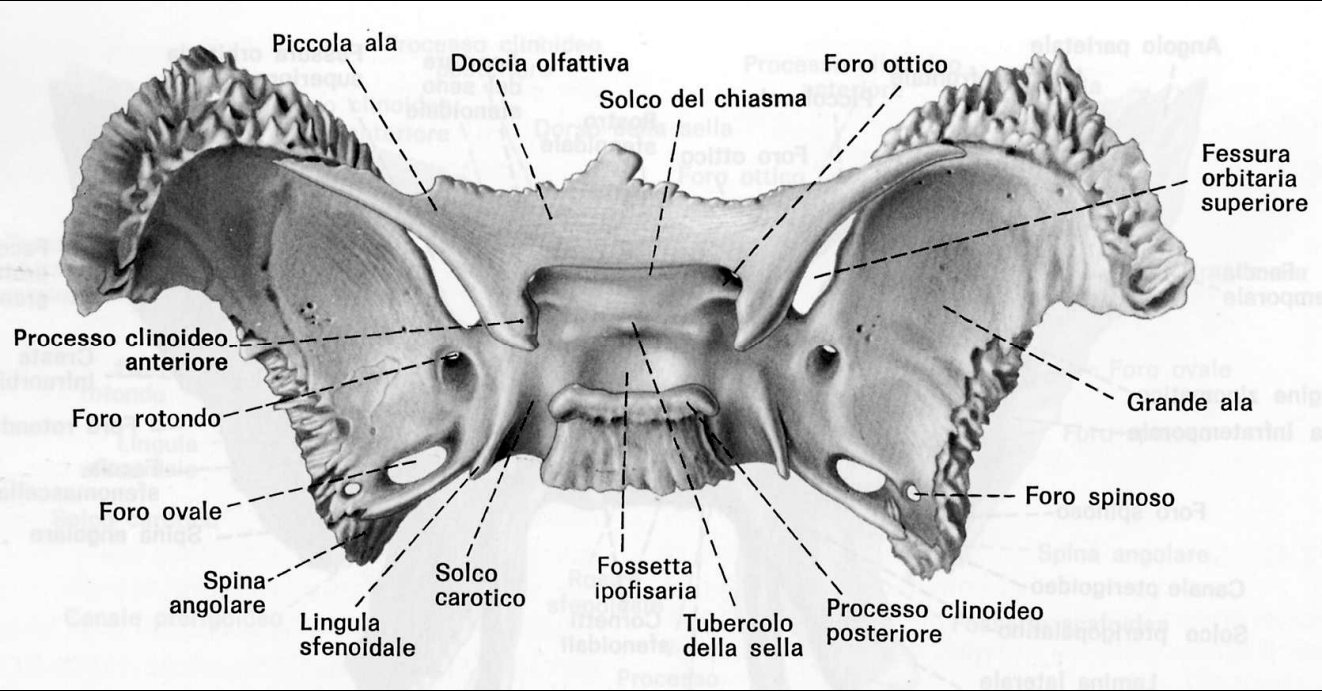


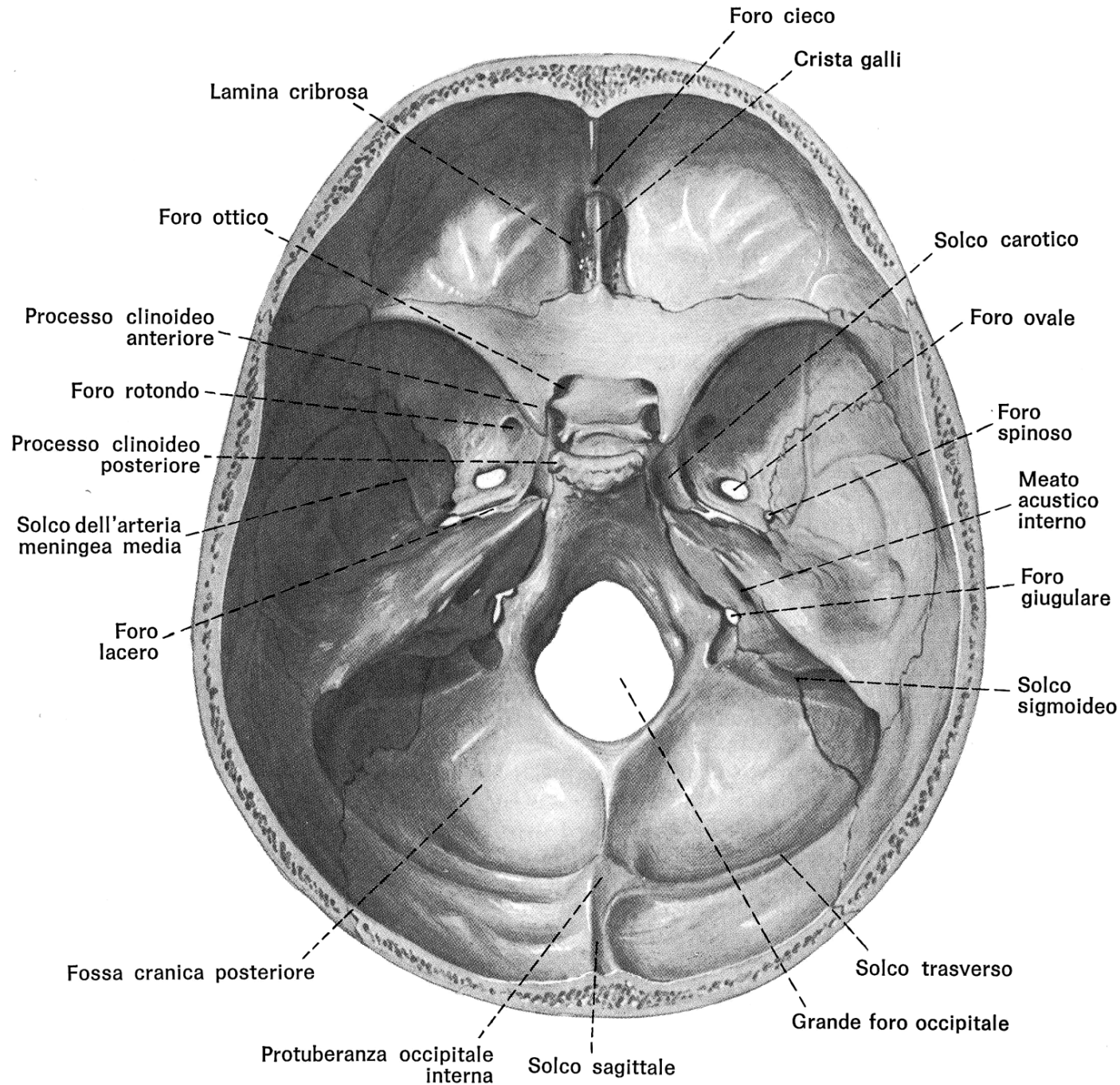
Facce laterali

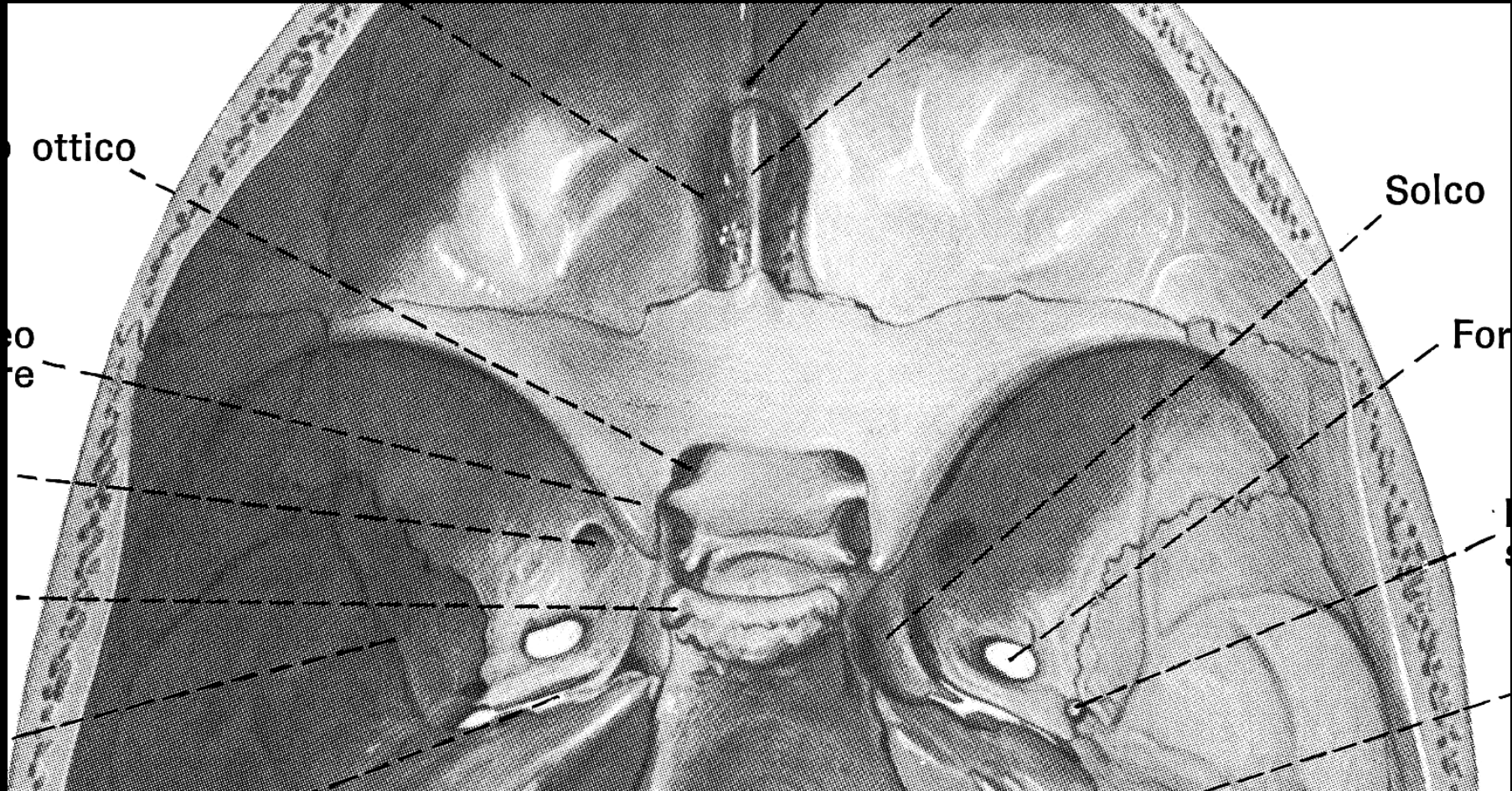
radici delle piccole ali (origine antero-superiore)

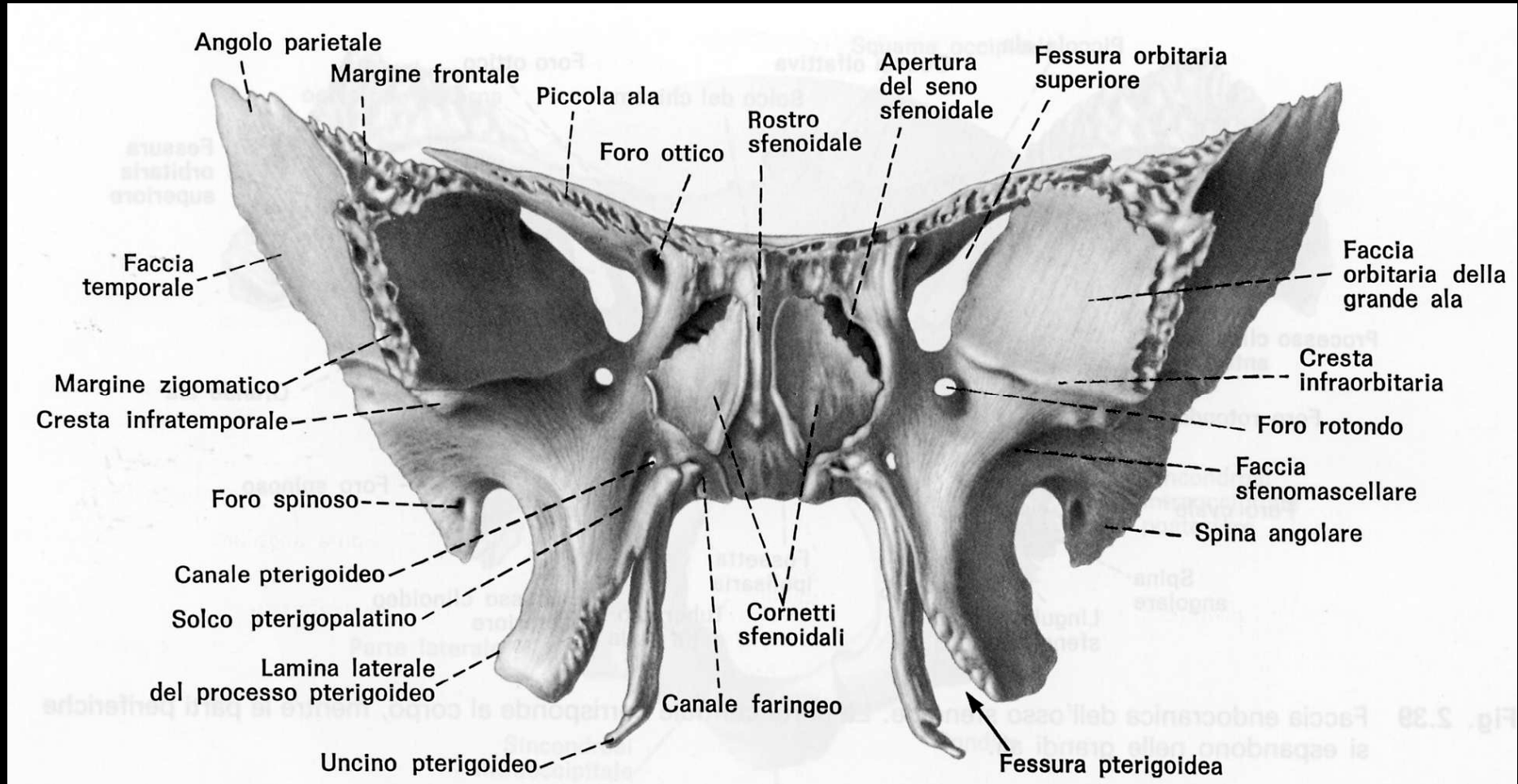
radici delle grandi ali (porzione inferiore)

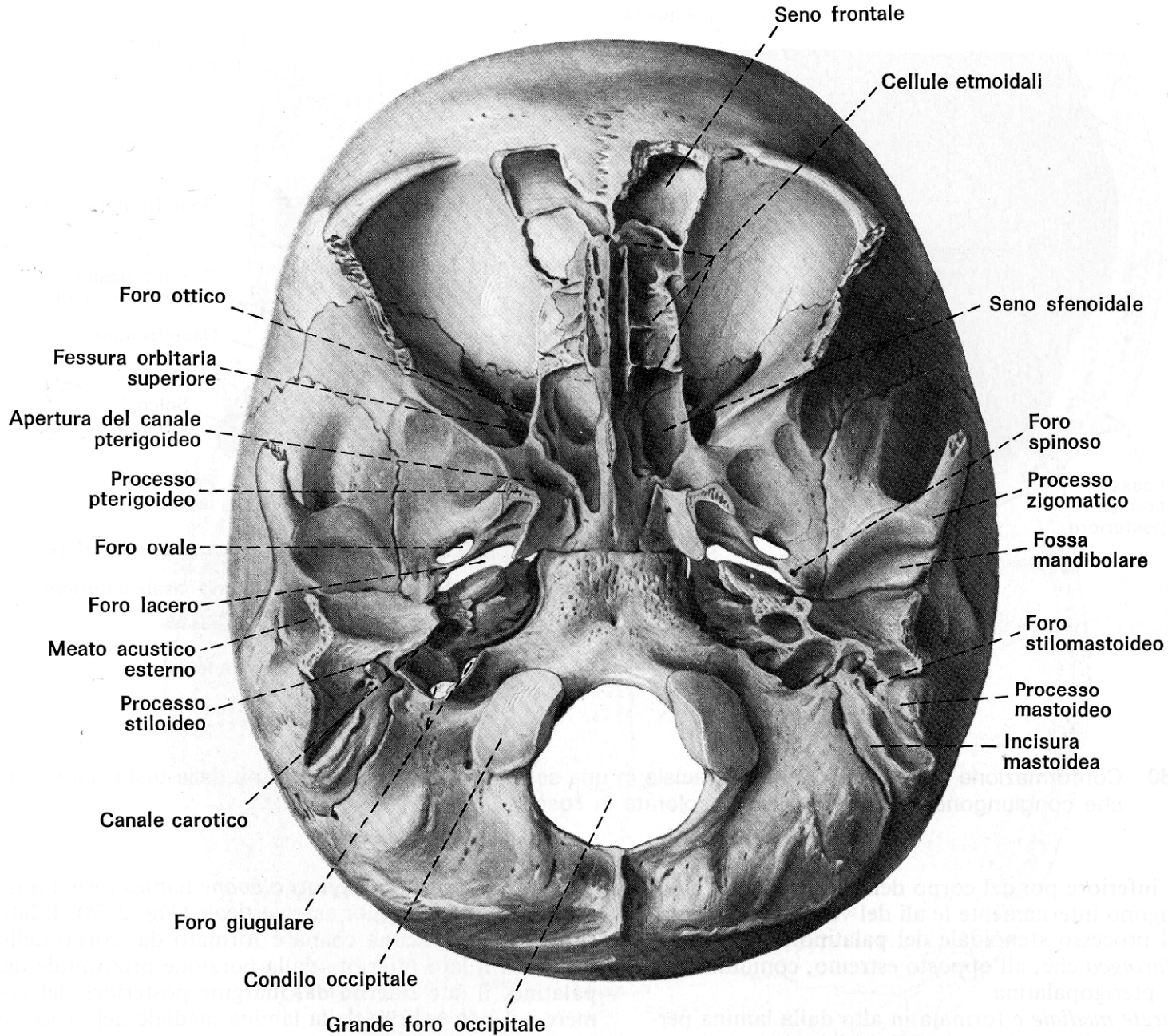
piccolo margine libero (solco carotico – arteria carotide int.)











Piccole ali dello sfenoide

Forma

lamine appiattite triangolari

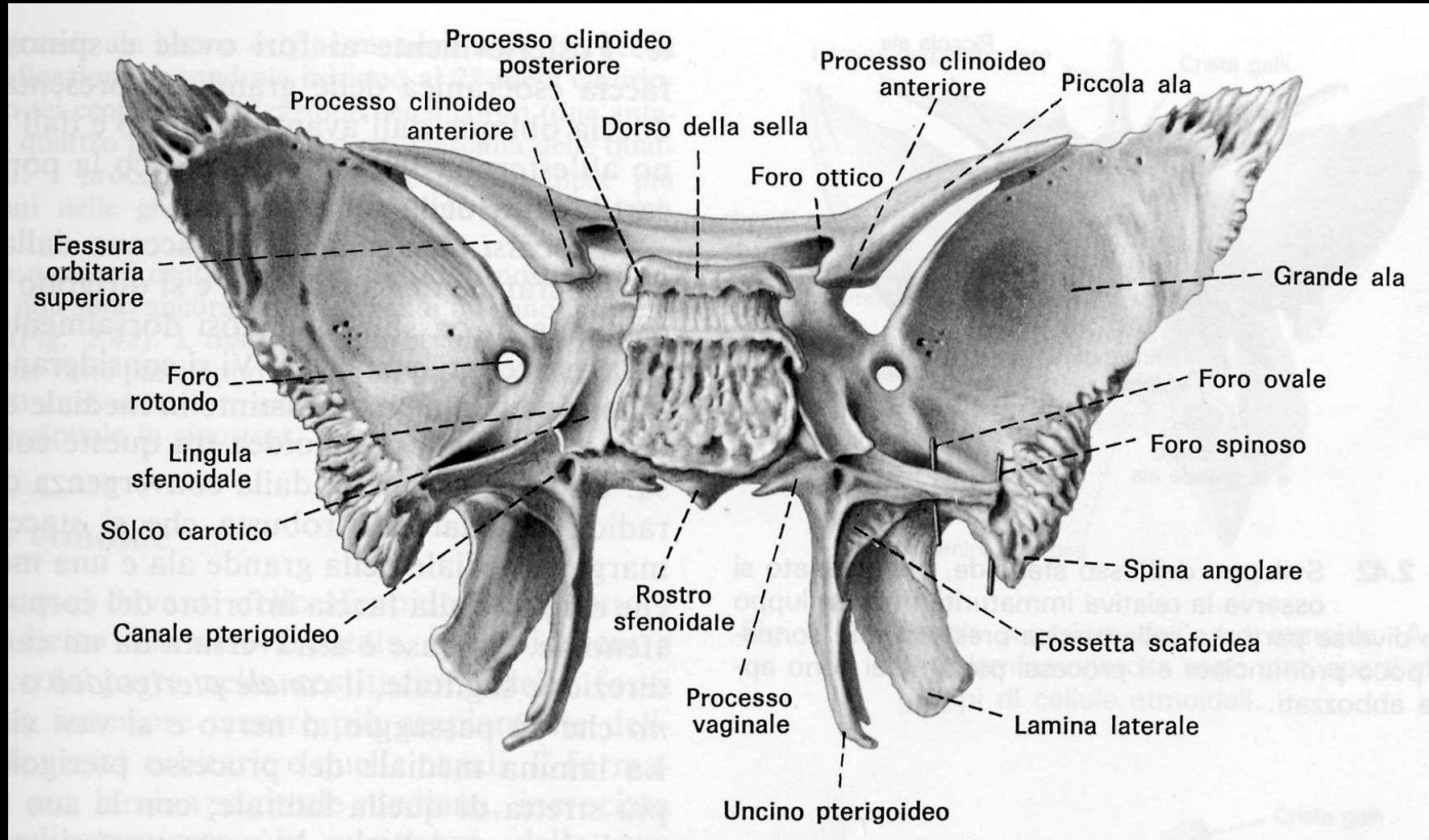
faccia superiore – faccia endocranica dell'osso frontale

Faccia inferiore – tratto posteriore della cavità orbitaria

margine anteriore – osso frontale

margine posteriore – libero

Delimita la fessura orbitaria superiore



Grandi ali dello sfenoide

faccia endocranica

fossa cranica media

foro rotondo

n. mascellare

foro ovale

n. mandibolare e art. piccola meningea

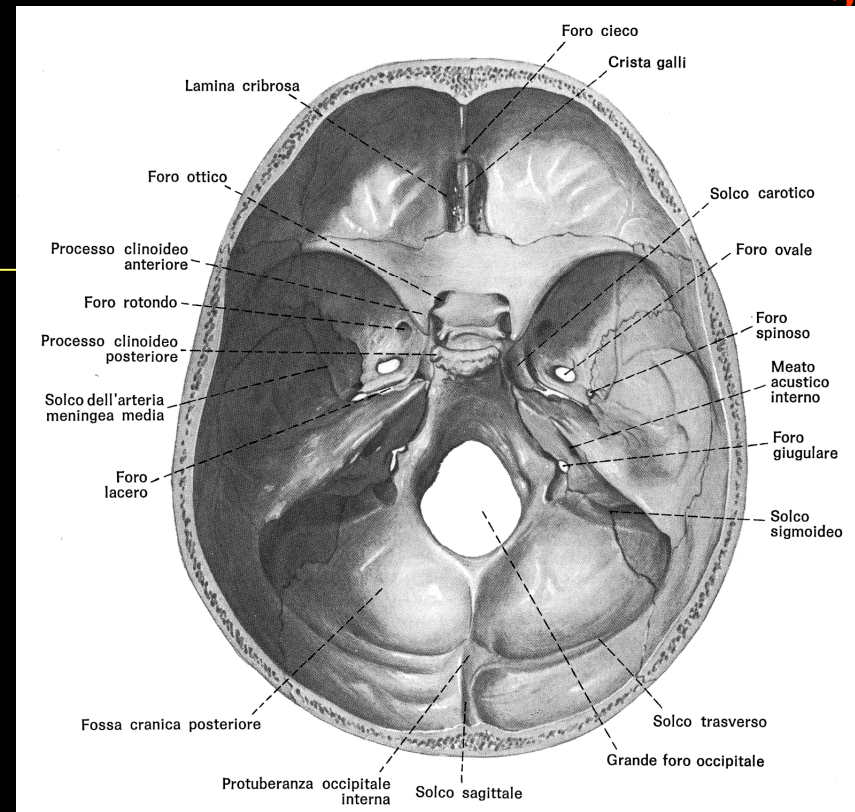
foro spinoso

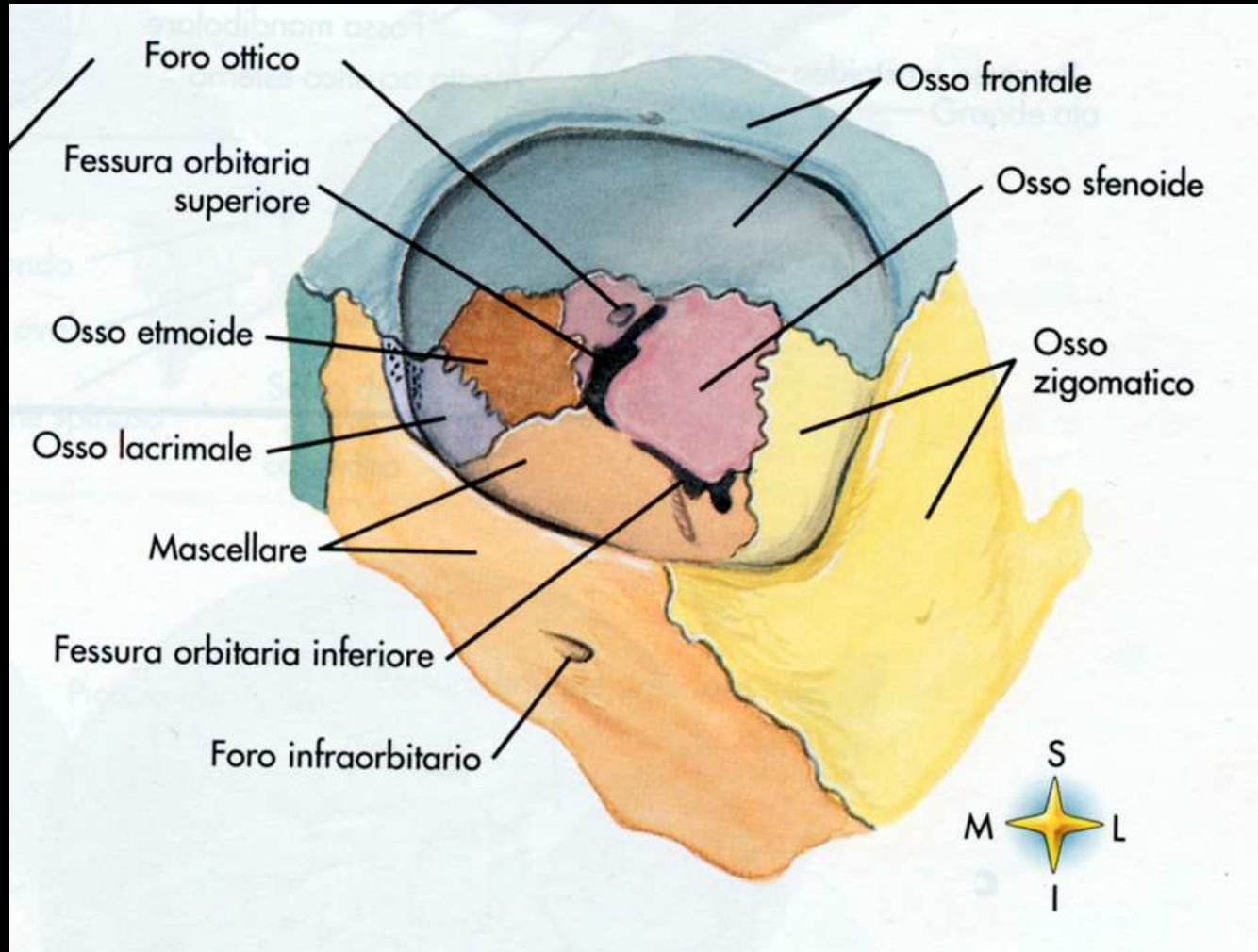
n. spinoso e art. media meningea

faccia esocranica

marginale mediale convesso

marginale laterale concavo





I processi pterigoidei

Forma

Base

Lamina media

faccia mediana – parete lat delle cavità nasali

faccia laterale – cavità pterigoidea

muscolo elevatore velo palato

marginine libero (uncino pterigoideo)

Lamina laterale

faccia mediale

faccia laterale

